



2/261 Old Pacific Highway Swansea NSW

2 1 1

This over 55s villa in the heart of Swansea is perfect for those who don't like the big complexes.

In a nice private complex of just 3, this is the middle villa and is big on privacy.

Features two good size bedrooms each with built in robes. Large kitchen with plenty of bench space and large pantry. Spacious living and dining area that opens to the private courtyard.

Main bathroom has separate bath and shower, while the laundry has that all important second toilet.

Located less than a 400 metres level walk to Coles, this villa is in the heart of it all yet quietly tucked away - the best of both worlds.

For investors the current rent is increasing to \$500 per week in September.

Strata Levies approx. \$40 per week.

Price : \$630,000

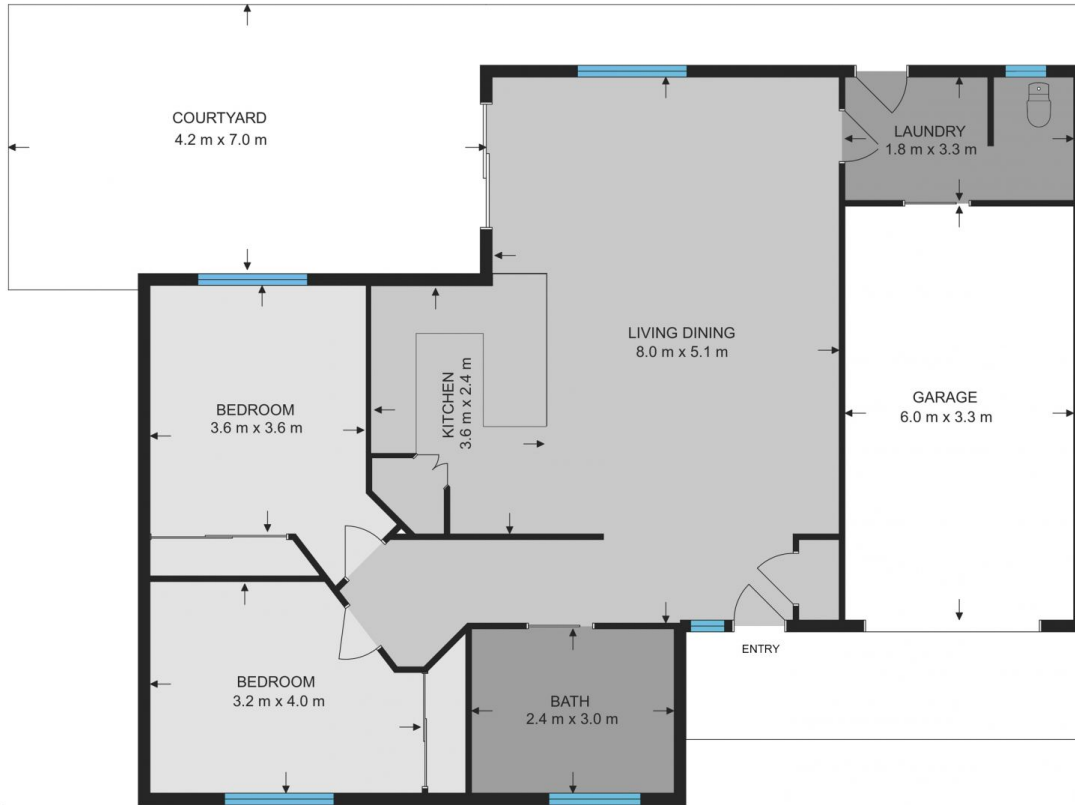
View : <https://www.andrewmcgrathfn.com.au/sale/nsw/lake-macquarie-east/swansea/residential/villa/8029313>



Andrew McGrath
(02) 4972 1066

2/261 Old Pacific Highway, Swansea

Main Floor Total Interior 107sqm



Measurements are approximate and are to be used only as a guide

 **firstnational**
REAL ESTATE | Andrew McGrath